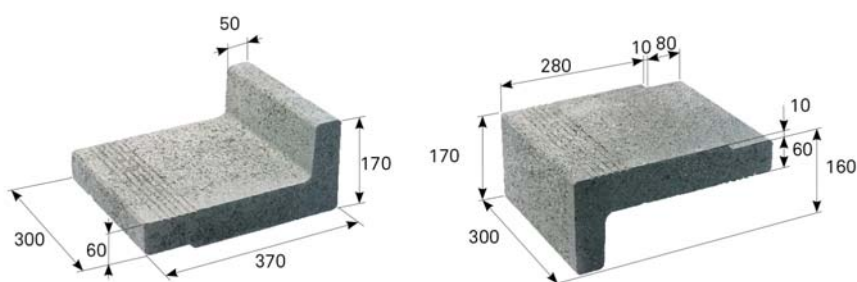




## TECHNICAL INFORMATION



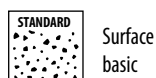
two modifications applied to the BEST CANTO element

name	layout dimensions (mm)			consumption (pcs/lm)	quantity (pcs)		weight (kg)			max. tonnage up to 24 t	
	height	footprint length	width		layer	pallet	pcs	pallet	including pallet	pcs of pallets	pcs
<b>BEST CANTO</b>	160	320/285	300	3.3	16	32	21.0	672	702	24	768

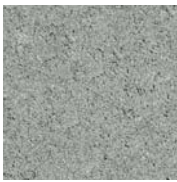
We are holders of the Gold Certificate for complete certification according to ISO 9001, ISO 14001, ISO 50001, ISO 45001. Our products are manufactured and inspected pursuant to European harmonized standards.

production standard	maximum deviation from declared production dimensions		bending strength	skid/slip resistance	ČSN 73 1326, weather resistance, method A
	width and length	height			
ČSN EN 1339	±5 mm	±5 mm	≥ 3.5 MPa	satisfactory	≤ 1.0 kg/m <sup>2</sup> after 100 cycles

## EXPLANATIONS OF PICTOGRAMS



## SURFACE FINISHES AND COLOURS



NATURAL

surface	characteristics	colour
STANDARD	standard surface with natural aggregate roughness corresponding to the layer of concrete paving	natural

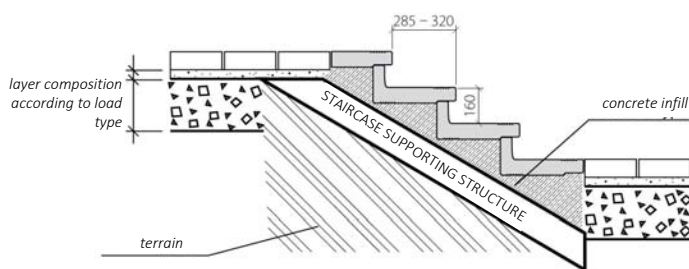
## GENERAL INFORMATION

Two-layer vibrated element with high strength, frost resistance, surface resistance to water and chemical de-icing agents. The staircase element has low abrasion and good adhesion properties. BEST concrete elements are permanently impregnated against contamination.

The minimum shipping quantity is 1 piece. The goods are loaded on marked pallets BEST (30 kg) or BEST large (38 kg) according to the production capacity of individual plants.

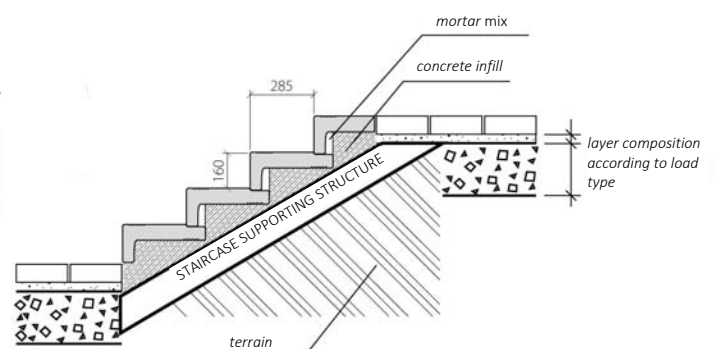
When laying, it is important to follow the correct procedure according to the instructions for use ([www.best.cz](http://www.best.cz)).

using the BEST - CANTO stair tread in such a way that the vertical side of the fitting faces upwards



- the steps can be placed in a damp concrete mix or they can be mounted on pre-concreted stair treads fully in the mortar bed
- by the relative position of the interlocking fittings, the length of the tread contact can be determined in the range of 285 to 320 mm
- the joints between the elements are always filled with waterproof and frost-resistant grout
- installation starts from the bottom

using the BEST - CANTO stair tread in such a way that the vertical side of the fitting faces downwards



- the steps can be placed in a damp concrete mix or they can be mounted on pre-concreted stair treads fully in the mortar bed when mounting on pre-concreted stair treads, the space is filled with mortar mixture (see picture)
- the joints between the elements are always filled with waterproof and frost-resistant grout
- installation starts from the bottom

