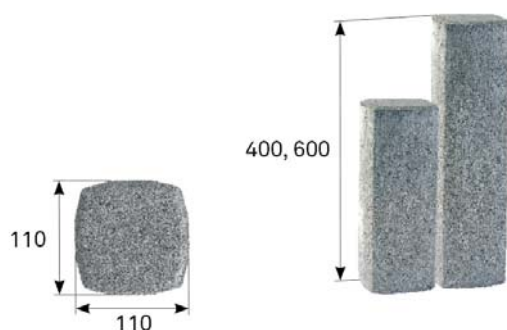




TECHNICAL INFORMATION



name	manufacturing dimensions (mm)			consumption (pcs/lm)	quantity (pcs/pallet)	weight (kg)			max. tonnage up to 24 tonnes		note
	height	length	width			pcs	pallet	including pallet	pcs of pallets	pcs	
BEST PALISADE PREMIUM	400	110	110	9	48	11.0	528	558	24	1152	without inner cavity
	600	110	110	9	60	12.0	720	750	24	1440	inner cavity \varnothing 75 mm

We are holders of the Gold Certificate for complete certification according to ISO 9001, ISO 14001, ISO 50001, ISO 45001. Our products are manufactured and inspected pursuant to European harmonized standards.

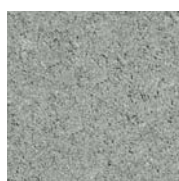
product height	production standard	maximum deviation from declared production dimensions		bending strength	ČSN 73 1326, weather resistance, method A
		width and length	height		
400	PN-BEST-09-2009/A	± 5 mm	max. ± 3 % height	≥ 3.5 MPa	≤ 1.0 kg/m ² after 75 cycles
600	PN-BEST-09-2009/A	± 5 mm	max. ± 3 % height	≥ 3.5 MPa	≤ 1.0 kg/m ² after 75 cycles

EXPLANATIONS OF PICTOGRAMS



Surface basic

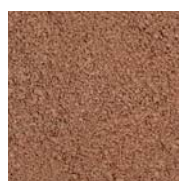
SURFACE FINISHES AND COLOURS



NATURAL



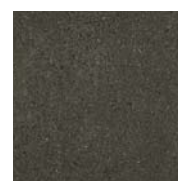
RED



CARAMEL



SANDSTONE



ANTHRACITE

surface	characteristics	colour
STANDARD	standard surface with natural aggregate roughness corresponding to the layer of concrete paving	natural, red, caramel, sandstone, anthracite

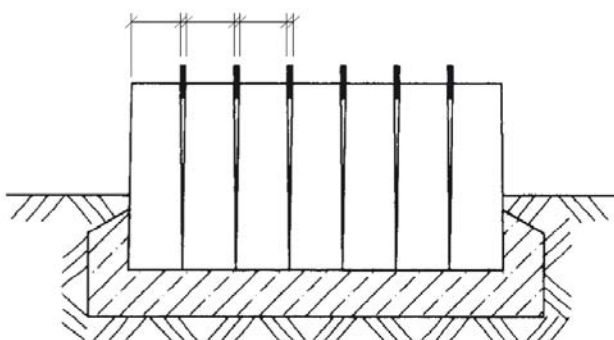
GENERAL INFORMATION

Two-layer vibrated element with high strength, frost resistance, surface resistance to water and chemical de-icing agents. The palisade has low abrasion and good adhesion properties. BEST concrete elements are permanently impregnated against contamination.

The minimum shipping quantity is 1 piece. The goods are loaded on marked pallets BEST (30 kg) or BEST large (38 kg) according to the production capacity of individual plants.

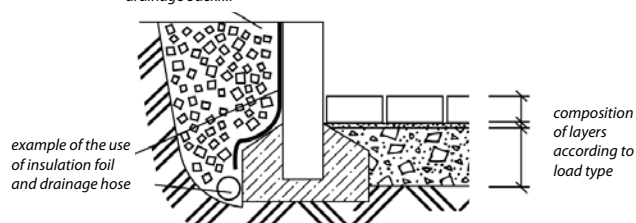
When laying, it is important to follow the correct procedure according to the instructions for use (www.best.cz).

conicity of palisades according to their height, temporary wedging



- the conical shape of the palisades must be respected when fitting them, which results from the technological necessity of their manufacture
- it is advisable to secure the even and vertical fitting of the palisades by means of temporary wedging

drainage backfill



example of the use of insulation foil and drainage hose

composition of layers according to load type

diagram of the outdoor staircase made of paving and palisades

