



TECHNICAL INFORMATION

Example of elements



name	layout dimensions (mm)			consumption pcs/m ²	quantity (pcs)		weight (kg)			max. tonnage up to 24 tonnes		note
	height	wall thickness	width		layer	pallet	pcs	pallet	incl. pallet	pcs of pallets	pcs	
BEST STONE I	160	1000	220	6.25	4	20	90	1800	1838	13	260	continuous element
BEST STONE II	160	800	220	7.81	5	25	72	1800	1830	13	325	continuous element
BEST STONE III	160	600	220	10.42	5	25	54	1350	1380	17	425	continuous element
BEST STONE IV	160	500	220	-	5	25	45	1125	1163	20	500	end element
BEST STONE V	160	400	220	-	12	60	36	2160	2198	10	600	end element
BEST STONE VI	160	300	220	-	12	60	27	1620	1658	14	840	end element
BEST STONE VII	160	200	220	-	25	125	18	2250	2288	10	1250	end element
BEST STONE VIII	80	800	220	15.63	5	45	36	1620	1658	14	630	continuous element
BEST STONE IX	80	600	220	20.83	5	45	27	1215	1245	19	855	continuous element
BEST STONE X	80	500	220	-	5	45	22	990	1028	23	1035	end element
BEST STONE XI	80	400	220	-	12	108	18	1944	1982	12	1296	end element
BEST STONE XII	80	300	220	-	12	108	13	1404	1442	16	1728	end element
BEST STONE XIII	80	200	220	-	25	225	9	2025	2063	11	2475	end element



Surface
chipped

TECHNICAL INFORMATION

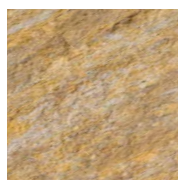
We are holders of the Gold Certificate for complete certification according to ISO 9001, ISO 14001, ISO 50001, ISO 45001. Our products are manufactured and inspected pursuant to European harmonized standards.

production standard	maximum deviation from declared production dimensions		tensile strength	capillary absorptivity
	width and length	height		
ČSN EN 771-3+A1	+3/-5 mm	+3/-5 mm	≥ 25 MPa	not more than 7 g/m ² s

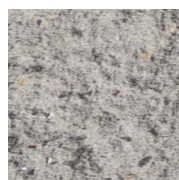
SURFACE FINISHES AND COLOURS



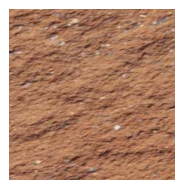
COLORMIX BRILANT



COLORMIX SAND



NATURAL



CARAMEL

surface	characteristics	colour
CHIPPED	The individual concrete blocks are split using the jaws of the splitter, revealing the irregular rough structure.	colormix brilant, colormix sand, natural, caramel

GENERAL INFORMATION

Universal masonry linear elements made of plain vibrated concrete. The visible wall of the fitting is formed by an irregular rough structure.

The minimum shipping quantity is 1 piece. The goods are loaded on marked pallets BEST (30 kg) or BEST large (38 kg) according to the production capacity of individual plants.

During installation, it is important to follow the correct procedure according to the instructions for use (www.best.cz).

