



TECHNICAL INFORMATION



name	layout dimensions (mm)			consumption		quantity (pcs)		weight (kg)			max. tonnage up to 24 tonnes	
	height	thickness	length	pcs/lm ²	pcs/lm ³	layer	pallet	pcs	pallet	including pallet	number of pallets	pcs
BEST FORMWORKS 10	250	100	500	8	80.00	22	88	17.5	1540	1578	15	1320
BEST FORMWORKS 15	250	150	500	8	53.34	14	70	21.5	1505	1543	15	1050
BEST FORMWORKS 20	250	200	500	8	40.00	12	60	25.3	1518	1556	15	900
BEST FORMWORKS 25	250	250	500	8	32.00	10	50	27.4	1370	1408	17	850
BEST FORMWORKS 30	250	300	500	8	26.67	8	40	29.4	1176	1214	19	760
BEST FORMWORKS 40	250	400	500	8	20.00	6	30	32.7	981	1019	23	690
BEST FORMWORKS 50	250	500	400	10	20.00	6	30	33.4	1002	1040	23	690
BEST FORMWORKS 15	200	150	500	10	66.67	10	60	15.0	900	930	24	1440
BEST FORMWORKS 20	200	200	500	10	50.00	8	48	20.0	960	990	24	1152
BEST FORMWORKS 30	200	300	500	10	33.34	6	36	23.0	828	858	26	936
BEST FORMWORKS 40	200	400	500	10	25.00	4	24	26.0	624	654	28	672

Note: These values vary depending on the production capabilities of individual BEST plants, see www.best.cz for details.

EXPLANATIONS OF PICTOGRAMS



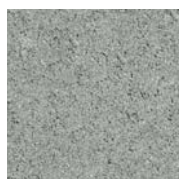
TECHNICAL INFORMATION

We are holders of the Gold Certificate for complete certification according to ISO 9001, ISO 14001, ISO 50001, ISO 45001. Our products are manufactured and inspected pursuant to European harmonized standards.

production standard	maximum deviation from declared production dimensions		tensile strength	ČSN EN 15 435, compressive strength class	capillary absorptivity	frost resistance ČSN 73 1322
	width and length	height				
ČSN EN 771-3+A1	+3/-5 mm	+3/-5 mm	≥ 15 MPa	≥ 2 MPa	not more than 7 g/m ² s	50 cycles

consumption of concrete filler	length/height										
	500/250	400/250	300/250	250/250	200/250	150/250	100/250	400/200	300/200	200/200	150/200
m ³ concrete / 1 pc	0.0361	0.0351	0.0243	0.0208	0.0134	0.0091	0.0037	0.0274	0.0203	0.0105	0.0071
m ³ concrete / 1 m ²	0.3613	0.2806	0.1940	0.1662	0.1074	0.0727	0.0294	0.2741	0.2026	0.1049	0.0705
m ³ concrete / 1 m ³	0.7226	0.7014	0.6467	0.6650	0.5368	0.4848	0.2944	0.6853	0.6753	0.5245	0.4700

SURFACE FINISHES AND COLOURS



NATURAL

surface	characteristics	colour
STANDARD	standard surface with natural aggregate roughness corresponding to the visible layer of concrete paving	natural

GENERAL INFORMATION

Universal masonry fittings made of plain vibrated concrete.

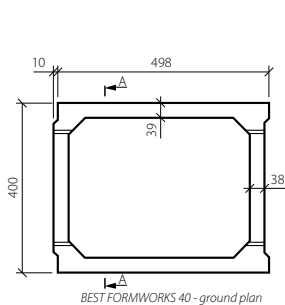
The maximum formworks height in one working cycle during concreting is 3 layers of lost formworks.

The minimum shipping quantity is 1 piece. The goods are loaded on marked pallets BEST (30 kg) or BEST large (38 kg) according to the production capacity of individual plants.

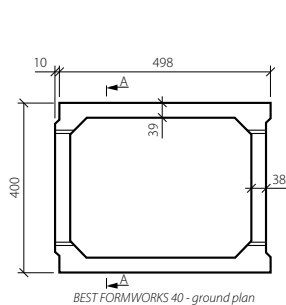
During installation, it is important to follow the correct procedure according to the instructions for use (www.best.cz).



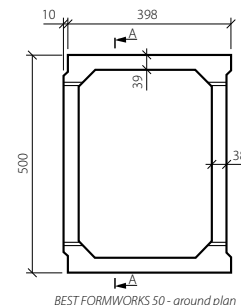
TECHNICAL DRAWINGS (mm)



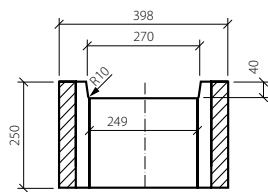
BEST FORMWORKS 40 - ground plan



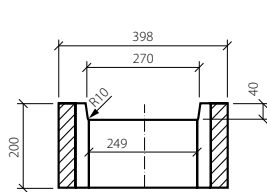
BEST FORMWORKS 40 - ground plan



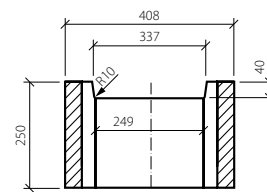
BEST FORMWORKS 50 - ground plan



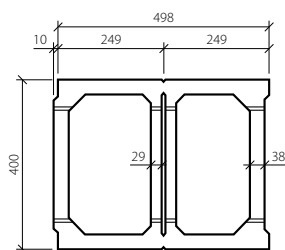
BEST FORMWORKS 40 - sectional view A-A



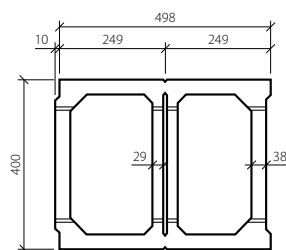
BEST FORMWORKS 40 - sectional view A-A



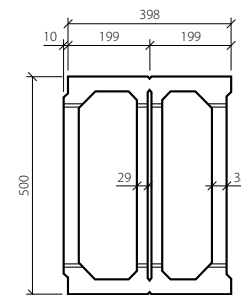
BEST FORMWORKS 50 - sectional view A-A



BEST FORMWORKS 40
- ready for cutting



BEST FORMWORKS 40
- ready for cutting



BEST FORMWORKS 50
- ready for cutting